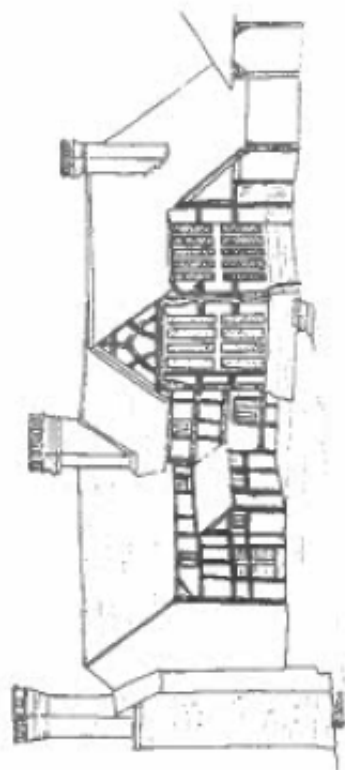


THE EAST GRINSTEAD SOCIETY 2010



Mill Place Farm

Overlooks the River Medway, is about 4 km south-west of the town and is visible from the Bluebell Railway. Two north-south conjoined timber-framed medieval halls date from the early 14th century, with an east-west extension dating from around 1500.

It is near the site of an important iron furnace operating in 1574 and is now an outdoor pursuits centre, with equestrian facilities and fishing in Leggats lakes.

PRESIDENT – Mr M J Leppard

CHAIRMAN	Vacant	VICE-CHAIRMAN	Mr J W Bridle 7 Dexter Drive East Grinstead RH19 4SU Tel: 01342 313485
HON. TREASURER	Mr N J Beale 10 Austen Close, East Grinstead RH19 1RZ Tel: 01342 326767	HON. SECRETARY	Dr C J V Wheatley 4 Portland Road East Grinstead RH19 4DZ Tel: 01342 321525
MEMBERSHIP & PROGRAMME	Mr C V Bowley 2 Eastern Road Lindfield RH16 2LP Tel: 01444 482576	COMMITTEE MEMBERS	Mr C V Bowley Mr H S Kitching Mrs J Roberts Mrs L A Sansom Mr R Maynard (Co-opted)

The East Grinstead Society monitors planning applications and cares for buildings & amenities in the town and surroundings.

PROGRAMME 2010

- Friday
February 19th **OPEN FORUM**
An opportunity to discuss current issues facing East Grinstead and the Society
- Friday
March 19th **THE ASHDOWN FOREST CIRCA 1900**
A talk and slide show, by PETER KIRBY
- Wednesday 3.30pm
April 7th **SPRING GARDEN TOUR GRAVETYE MANOR**
Led by the Head Gardener. Maximum 16 places; reservations please on 01342 321525
- Friday
April 16th **WALKS IN THE WEST COUNTRY AND PLACES I HAVE SLEPT**
Walks and the unusual places that he has slept, by RICHARD MASON
- Saturday 10.00am -
May 1st 1pm **TOWN & COUNTRY HERITAGE: WEST HOATHLY TO EAST GRINSTEAD**
Walk from St Margaret's Parish Church, West Hoathly led by CHRISTOPHER WHEATLEY
(For help with transport, please call 01342 321525)
- Sunday 2.30pm
May 2nd **19th and 20th CENTURY EAST GRINSTEAD: TOWN TRAIL 2**
A guided walk starting from High Street War Memorial, led by ANGELA COLE
- Monday 10.00am -
May 3rd 4pm **MAY FAIR: SOCIETY STALL IN HIGH STREET**
A chance to buy second-hand books, home-made jams, cakes and the Society's publications
- Friday
May 21st **MY LIFE WITH WATER**
45 years work on the River Ouse, its conservation and preservation, by JIM SMITH
- Saturday 9.30am -
May 29th 4pm **STAINED GLASS & CONVENT ARCHITECTURE**
Ashdown Park Hotel, Speldhurst and Tudeley, with pub lunch. Reservations please on 01342 321525
- Sunday
May 30th 2.30pm **EAST GRINSTEAD'S VICTORIAN HERITAGE; TOWN TRAIL 3**
Walk starting from Chequer Mead Arts Centre, led by CHRISTOPHER WHEATLEY
- Friday
June 18th **PUTTING BATEMANS TO BED**
How this famous house is closed down for the winter, by STELLA MITCHELL
- Friday
July 16th **I MARRIED THE VICAR**
The highs and lows of parish life, from a vicar's wife's perspective, by ROMY McCABE
- Thur. to Sun.
Sept. 9th to 12th **HERITAGE OPEN DAYS: FREE ACCESS TO LOCAL BUILDINGS AND EVENTS.**
GUIDED WALK THROUGH HISTORIC EAST GRINSTEAD; starting from St Swithun's Church at 2.30pm on Sunday Sept.12th, led by ELKE WAGSTAFF
- Friday
Sept. 17th **DESPATCHES FROM THE HOME FRONT**
A talk on the war diaries of Joan Strange, 1939 – 1945, by CHRIS McCOOEY
- Saturday
Sept. 18th 9am **LONDON OPEN HOUSE: SMALL GROUP OUTING BY TRAIN**
Meet at East Grinstead Railway Station for a day excursion to see some notable buildings
- Friday
October 15th **43rd ANNUAL GENERAL MEETING**
Followed by a talk by a Councillor
- A Saturday in
Oct. 10am-4pm **LOCAL HISTORY FAIR**
See an exhibit by LAURA SANSOM on our activities & what is underway in Sussex
- Friday
November 19th **HOW TO BE, OR NOT TO BE, AN EDWARDIAN LADY**
A talk on manners and conventions of Edwardian society, by ELIZABETH LANYON
- Friday
December 10th **SOUNDS AND SONGS OF WORLD WAR TWO**
With words and music, by DON LAY

Friday meetings start at 7.30pm in the Main Hall, East Court, with a charge of £1.00/member for coffee.
Non-members welcome at £1.50/person for Friday meetings and £2/person for other events, children free.
For more information contact Programme Secretary, Tel: 01444 482576, Email: bowley902@btinternet.com

Website: www.eastgrinsteadsociety.org

(Illustration: Mill Place Farm, sketch by CJV Wheatley © 2009)