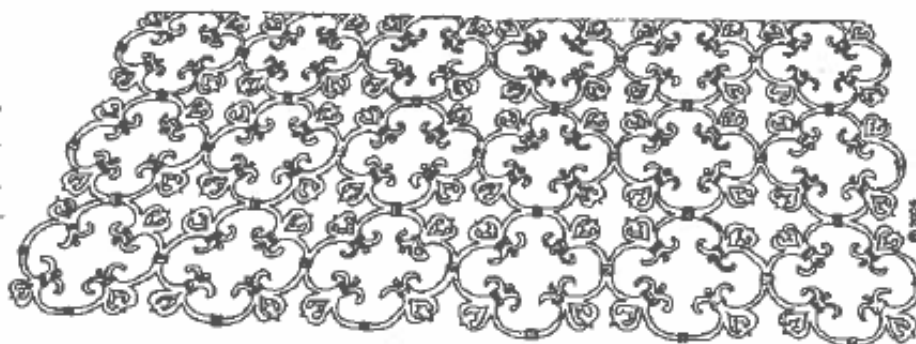


THE EAST GRINSTEAD SOCIETY

2009



Wrought iron Garden gate

Leading from Gravetye Manor into a garden conceived by William Robinson, who lived here from 1884 to 1935. Gravetye was built by Richard Infield for his bride Katherine Compton in 1598. It is now a prestige country house hotel, which derives most of its produce for the table from an oval walled vegetable garden.

PRESIDENT – Mr M J Leppard

CHAIRMAN	Vacant	VICE-CHAIRMAN	Mr J W Bridle 7 Dexter Drive East Grinstead RH19 4SU Tel: 01342 313485
HON. TREASURER	Mr N J Beale 10 Austen Close, East Grinstead RH19 1RZ Tel: 01342 326767	HON. SECRETARY	Dr C J V Wheatley 4 Portland Road East Grinstead RH19 4DZ Tel: 01342 321525
MEMBERSHIP & PROGRAMME	Mr C V Bowley 2 Eastern Road Lindfield RH16 2LP Tel: 01444 482576	COMMITTEE MEMBERS	Mr C V Bowley Mr H S Kitching Mrs J Roberts Mrs L A Sansom Mr C W F Streeter

The East Grinstead Society monitors planning applications
and cares for buildings & amenities in the town and surroundings.

PROGRAMME 2009

- Friday
January 16th **TRAVELS AND TRAVAILS OF A TRAFFIC AND TRANSPORT MAN**
Experiences of an international traffic consultant, by ALAN CARTER
- Friday
February 20th **OPEN FORUM**
An opportunity to discuss current issues facing East Grinstead and the Society
- Friday
March 20th **FROM SAHARA TO THE GRAND CANYON**
Charity fund-raising exploits around the world, by HARRY TOWNSEND
- Friday
April 17th **DEFYING THE DEMON**
The history of smallpox in Sussex, by DIANA CROOK
- Saturday 10.00am -
May 2nd 1pm **TOWN & COUNTRY HERITAGE: WEST HOATHLY TO EAST GRINSTEAD**
Walk from St Margaret's Parish Church, West Hoathly led by CHRISTOPHER WHEATLEY
- Sunday 2.30pm
May 3rd **19th and 20th CENTURY EAST GRINSTEAD: TOWN TRAIL 2**
A guided walk starting from High Street War Memorial, led by ANGELA COLE
- Monday 10.00am -
May 4th 4pm **MAY FAIR: SOCIETY STALL IN HIGH STREET**
A chance to buy second-hand books, home-made jams, cakes and the Society's publications
- Friday
May 15th **MAKING A SPLASH**
Swimming pools and lidos in Sussex, by DIANA DURDEN
- Saturday 9.30am -
May 30th 4pm **CONVENT ARCHITECTURE, MODERN DAY USES & STAINED GLASS**
Small group outing to Ashdown Park, then stained glass at Speldhurst and Tudeley.
Reservations, please, on 01342 321525
- Sunday
May 31st 2pm **EAST GRINSTEAD'S VICTORIAN HERITAGE; TOWN TRAIL 3**
Walk starting from Chequer Mead Arts Centre, led by CHRISTOPHER WHEATLEY
- Friday
June 19th **SUSSEX CURES AND CUSTOMS**
By BRION PURDEY
- Thur. to Sun.
Sept. 10th to 13th **HERITAGE OPEN DAYS: FREE ACCESS TO LOCAL BUILDINGS AND EVENTS.**
GUIDED WALK THROUGH HISTORIC EAST GRINSTEAD; starting from
St Swithun's Church at 2.30pm on Sunday Sept.13th, led by ELKE WAGSTAFF
- Friday
Sept. 18th **HORSHAM TO LITTLEHAMPTON IN 100 YEARS**
History and navigation on the river Arun over 100 years, by TONY PRATT
- Saturday
Sept. 19th 9am **LONDON OPEN HOUSE: SMALL GROUP OUTING BY TRAIN**
Meet at East Grinstead Railway Station for a day excursion to London
- Friday
October 16th **42nd ANNUAL GENERAL MEETING**
Followed by a talk by a County Councillor
- A Saturday in
Oct. 10am-4pm **LOCAL HISTORY FAIR**
See an exhibit by LAURA SANSOM on our activities & what is underway in Sussex
- Friday
November 20th **JESSIE'S JOURNAL**
A story of migration to Canada in the late nineteenth century, by GEOFF BRIDGER
- Friday
December 11th **SUSSEX PIERS**
Development and demise of the seaside pier in Sussex, by COLIN BOWLEY

All Friday meetings start at 7.30pm in Main Hall, East Court.

Non-members welcome at all events.

Programme Secretary, Tel: 01444 482576. Email: bowley902@btinternet.com

Website: www.eastgrinsteadsociety.org

(Illustration: Wrought iron garden gate at Gravetye Manor, sketch by CJV Wheatley © 2008)